

Community Safety Partnership Briefing – 19th July 2017

Kent County Council Resilience and Emergency Planning

**Fiona Gaffney – Head of Resilience and Emergency
Planning**



Major Incidents and Disasters

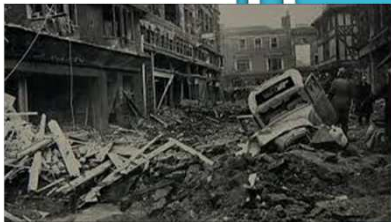


Bus With U.S. Tourists Plunges Off English Highway; 10 Killed, 30 Hurt
 November 11, 1993
 From Associated Press



1939-45
 1953
 1968
 1987
 1989
 1993
 1994
 1998
 2000
 2006
 2007
 2008
 2009
 2010
 2011
 2012
 2013
 2014
 2015
 2016
 2017

Major Incidents and Disasters Affecting Kent



Civil Contingencies Act 2004

Civil Contingencies Act 2004 - KCC's Duties Under the Act

KCC along with other Local Authorities is a 'Category 1 Responder' within meaning of the Act – equal to Kent Police, Kent Fire and Rescue Service, South East Coast Ambulance Service and NHS England.

- Risk Assessment
- Emergency Planning
- Business Continuity Management (BCM)
- Warning – Informing and Alerting the Public
- Information Sharing
- Co-operation
- **Business Continuity Management Promotion**

Definition of Emergency

What is a Major Emergency?

Emergency is defined in Part 1 of Civil Contingencies Act as:

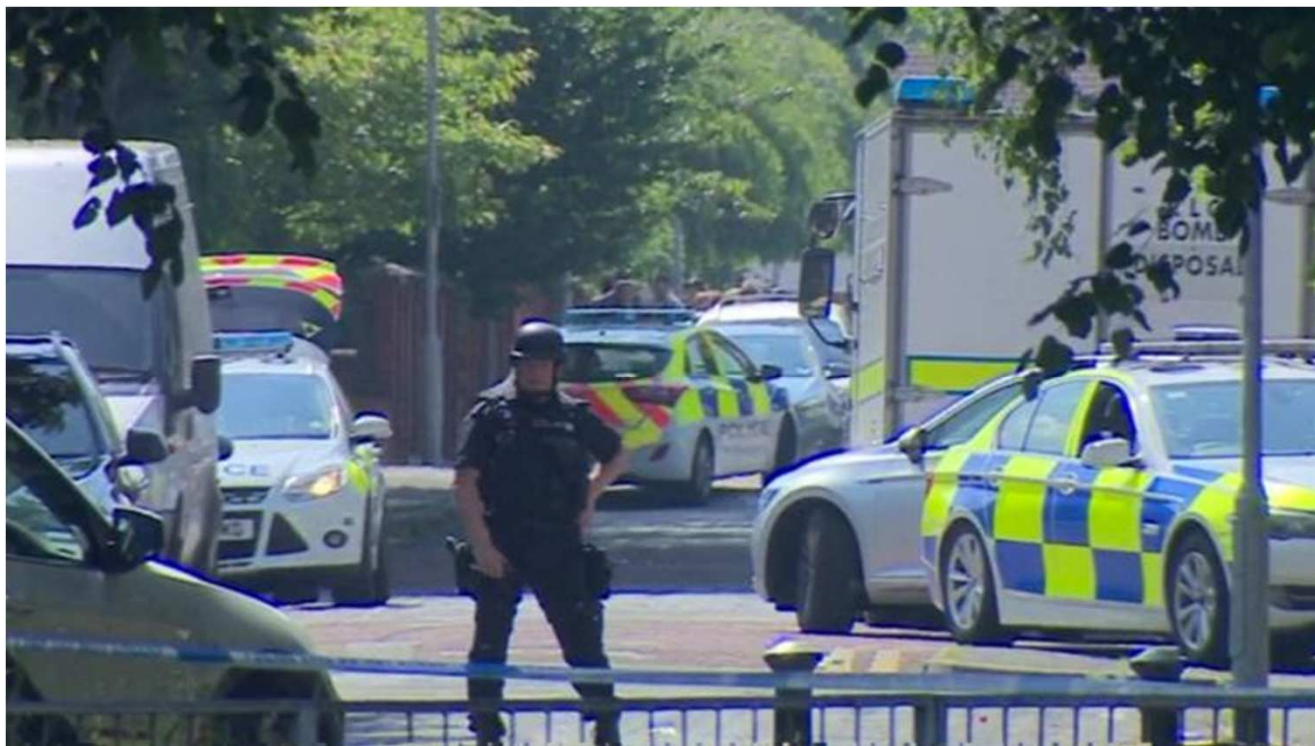
- An event or situation which threatens serious damage to **human welfare** in a place in the UK, the **environment** of a place in the UK, or war or terrorism which threatens serious damage to the **security** of the UK.
- ***This legal definition neatly reflects KCC's role.***



Kent Community Risk Register 2016

| Risk No. | Very High | Page | Risk No. | High | Page | Risk No. | Medium | Page |
|----------|---------------------------------------|------|----------|---|------|---|---|------|
| | | | 50 | Outbreak of plant disease | 30 | 29 | Infectious Diseases | 21 |
| 17a | Severe inland flooding | 14 | | Medium | | 31 | Zoonotic notifiable animal diseases | 22 |
| 18 | Local / urban flooding | 15 | 1 | Localised fire or explosion at a fuel distribution site | 1 | 33 | failure of a critical upstream oil/gas facility | 23 |
| 28 | Influenza-type disease (Pandemic) | 21 | 2 | Onshore fuel pipeline Incident | 1 | 34 | Industrial action by critical workers | 23 |
| Risk No. | High | Page | 3 | Explosion at a gas pipeline | 1 | 34a | Fire Service industrial action. | 24 |
| 4 | Toxic chemical release | 7 | 3a | Fire or explosion at a gas terminal | 1 | 35a | Strike action by prison officers | 24 |
| 5 | Radioactive substance release | 8 | 6 | Accidental release of radioactive material | 8 | 35b | Civil disturbance in a prison | 25 |
| 10 | Major Pollution of Controlled Waters | 10 | 7 | Biological substance release (Pathogens) | 8 | 36 | Influx of British Nationals from abroad | 25 |
| 13 | Transport of fuel/explosives accident | 11 | 8 | Biological substance release | 9 | 40 | Incident in Road Tunnel | 27 |
| 16 | Storms & Gales | 13 | 9 | Major food contamination incident | 9 | 42 | Attacks on Critical Infrastructure | 28 |
| 17 | Local fluvial flooding | 13 | 11 | Wildfire | 10 | 43 | Major Incident in Complex Built Environments | 28 |
| 21 | Low Temperatures & Heavy Snow | 16 | 12 | Maritime accident and blockade of a port | 11 | 45 | Railway incident – Channel Tunnel | 28 |
| 22 | Heat wave | 17 | 14 | Road or rail tanker incident | 12 | 47 | Major Shipping Incident | 29 |
| 24 | Major coastal and tidal flooding | 19 | 15 | Aviation accident | 12 | <div style="background-color: #008000; color: white; padding: 10px; text-align: center;"> <p>Low</p> <p>Currently No Low Risks</p> </div> | | |
| 32 | Constraint on the supply of fuel | 23 | 19 | Extremely hazardous flash flooding | 15 | | | |
| 37 | Failure of water infrastructure | 25 | 20 | Major reservoir dam failure/collapse | 16 | | | |
| 38 | Loss of telecommunications | 26 | 23 | Drought | 18 | | | |
| 39 | Failure of electricity network | 26 | 25 | Land movement | 20 | | | |
| 41 | Attacks on Crowded Places | 27 | 26 | Building collapse | 20 | | | |
| 44 | Major incident at a large scale event | 28 | 27 | Bridge collapse | 20 | | | |

Current Threat and Risk



Contest Strategy

Prevent

Safeguarding vulnerable people from radicalisation & extremism

- Respond to the ideological challenge of terrorism
- Support vulnerable people and prevent people from being drawn into terrorism
- Work with key sectors and institutions to address the risks

Contest Strategy

Prepare

Mitigates the impact of a terrorist attack that cannot be stopped

- Dynamic risk assessment at senior level
- Vigilant and alert staff
- Robust security regimes (physical and information)
- Share information with partners
- Continuity of service delivery
- Maintain public confidence



Kent County Council Roles and Responsibilities

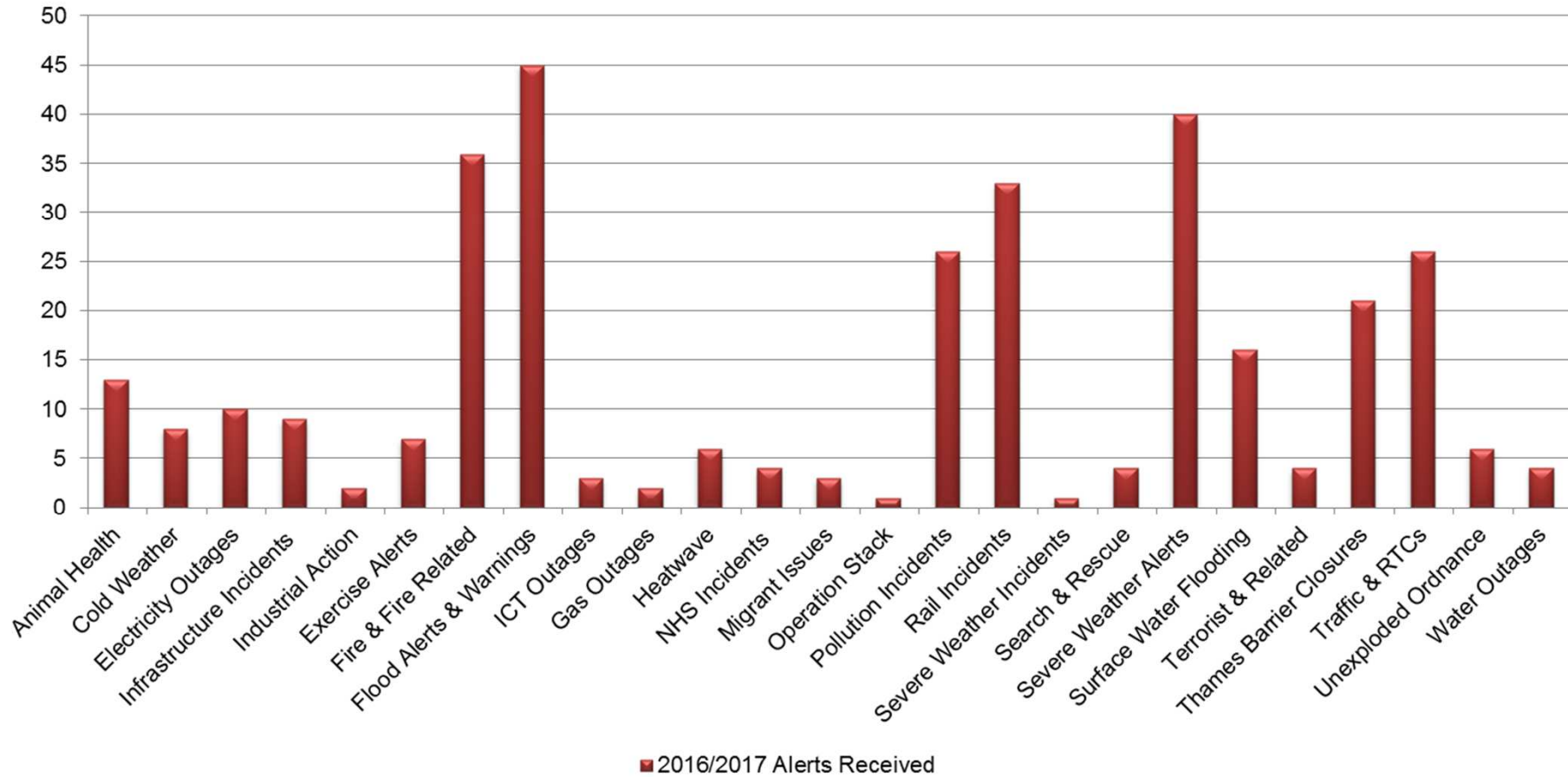
KCC Roles and Responsibilities

- Support the Emergency Services
 - Establishment of and transport to Welfare Centres for displaced people
 - Provide support services for the community and others affected by the emergency
 - Assist in the identification of vulnerable members of the community
 - Role of the Highway Authority in keeping routes open
 - Establishing mutual aid arrangements
 - Establish Temporary Mortuaries on instruction of HM Coroner
 - **Lead role in recovering from an emergency**
 - Maintain statutory services at an appropriate level
 - Public warning and informing
 - The co-ordination and lead on several key contingency plans
-

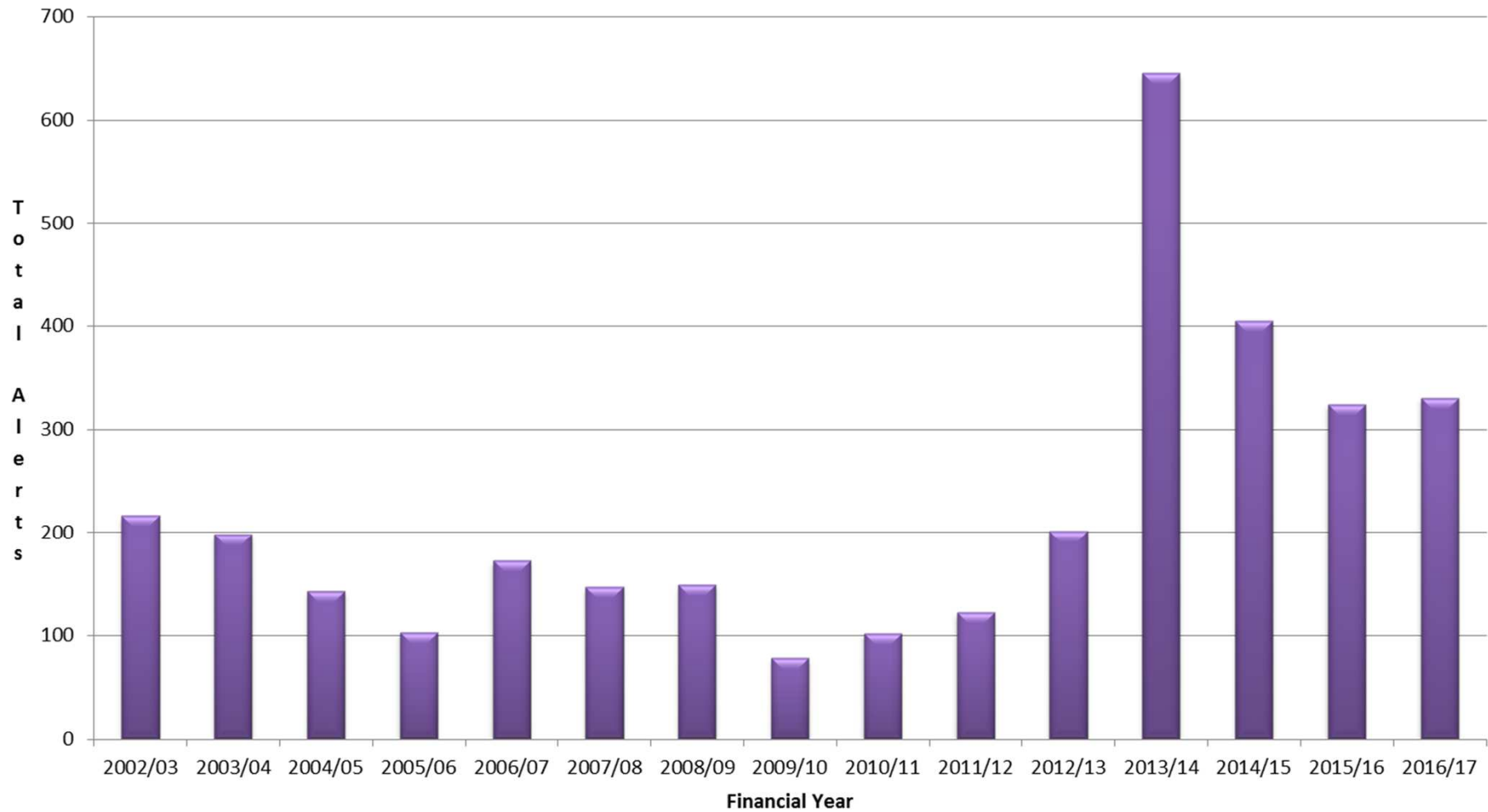
Resilience and Emergency Planning Service

- Professional subject matter experts
- Provides 24/7 Duty Emergency Planning Officer Function for KCC
- Maintains the County Emergency Centre
- Develops and maintains Emergency Plans and Business Continuity Plans
- Liaises with and advises Corporate Duty Director, Tactical Duty Director and Emergency Response Team
- Provides KCC with a programme of training and exercises
- Engages all parts of KCC in resilience matters
- Engages KRF partners (including voluntary sector) and communities in resilience matters
- Ensures that KCC is represented in KRF groups

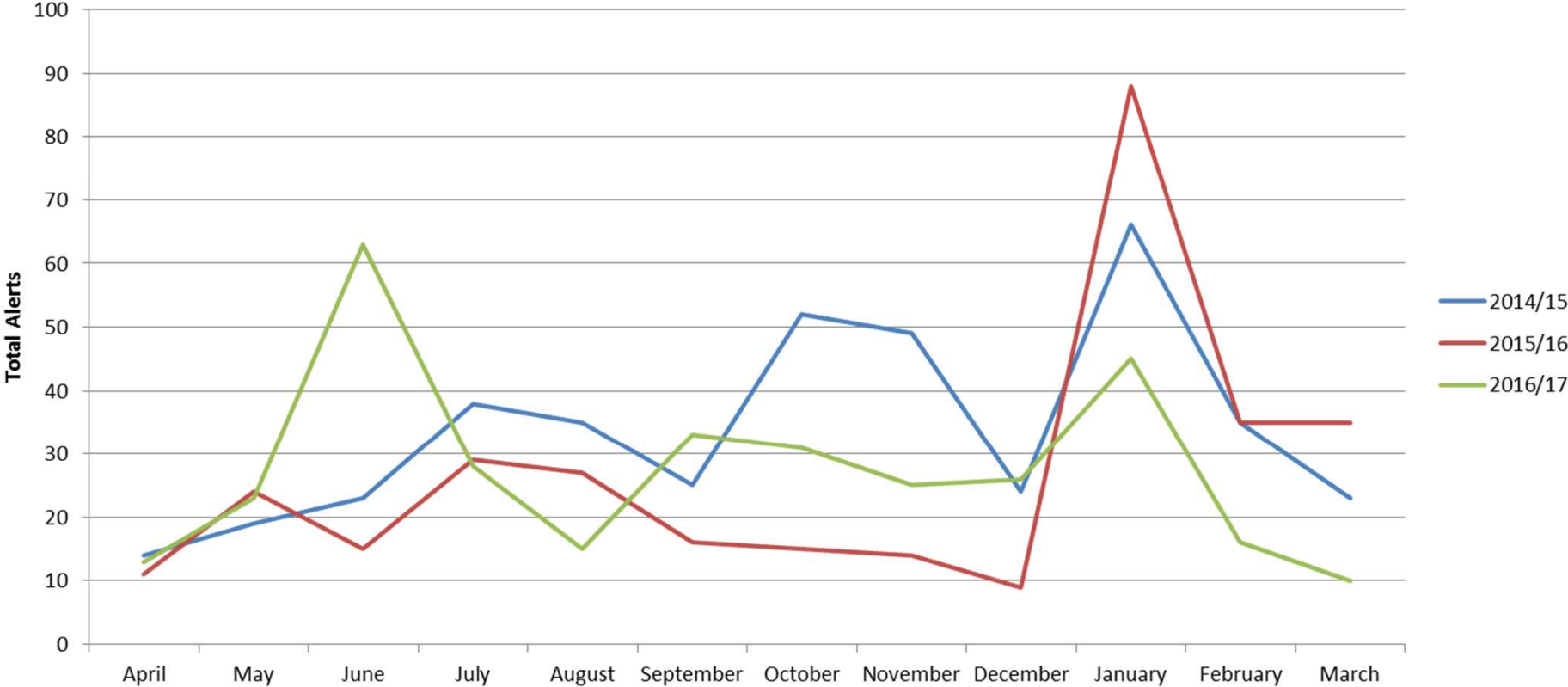
Analysis of Alerts Received by Duty Emergency Planning Officer by Category 2016/17



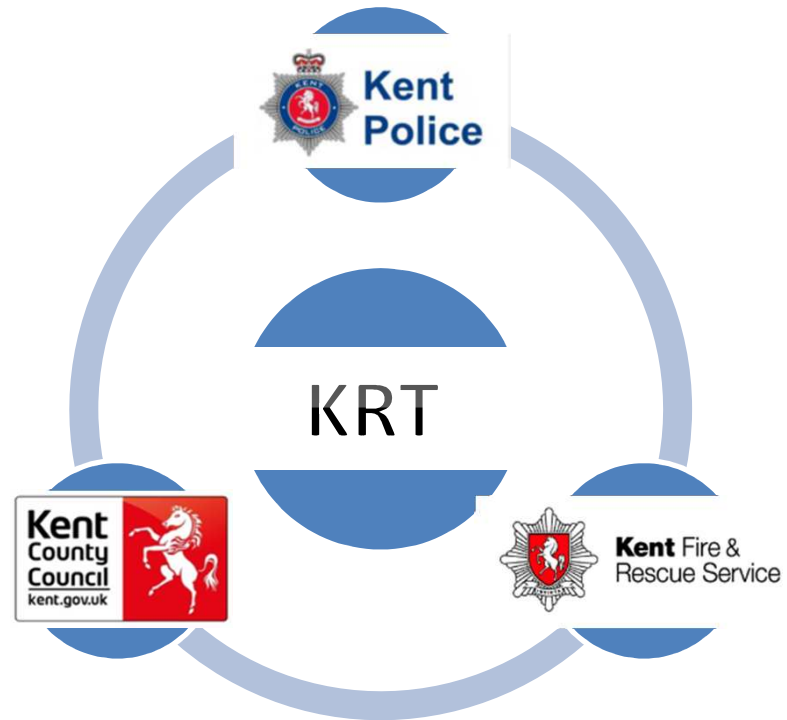
Total Alerts to Duty Emergency Planning Officer by Financial Year



Duty Emergency Planning Officer Alerts by Month (3 year comparison)



Kent Resilience Team



Kent Prepared



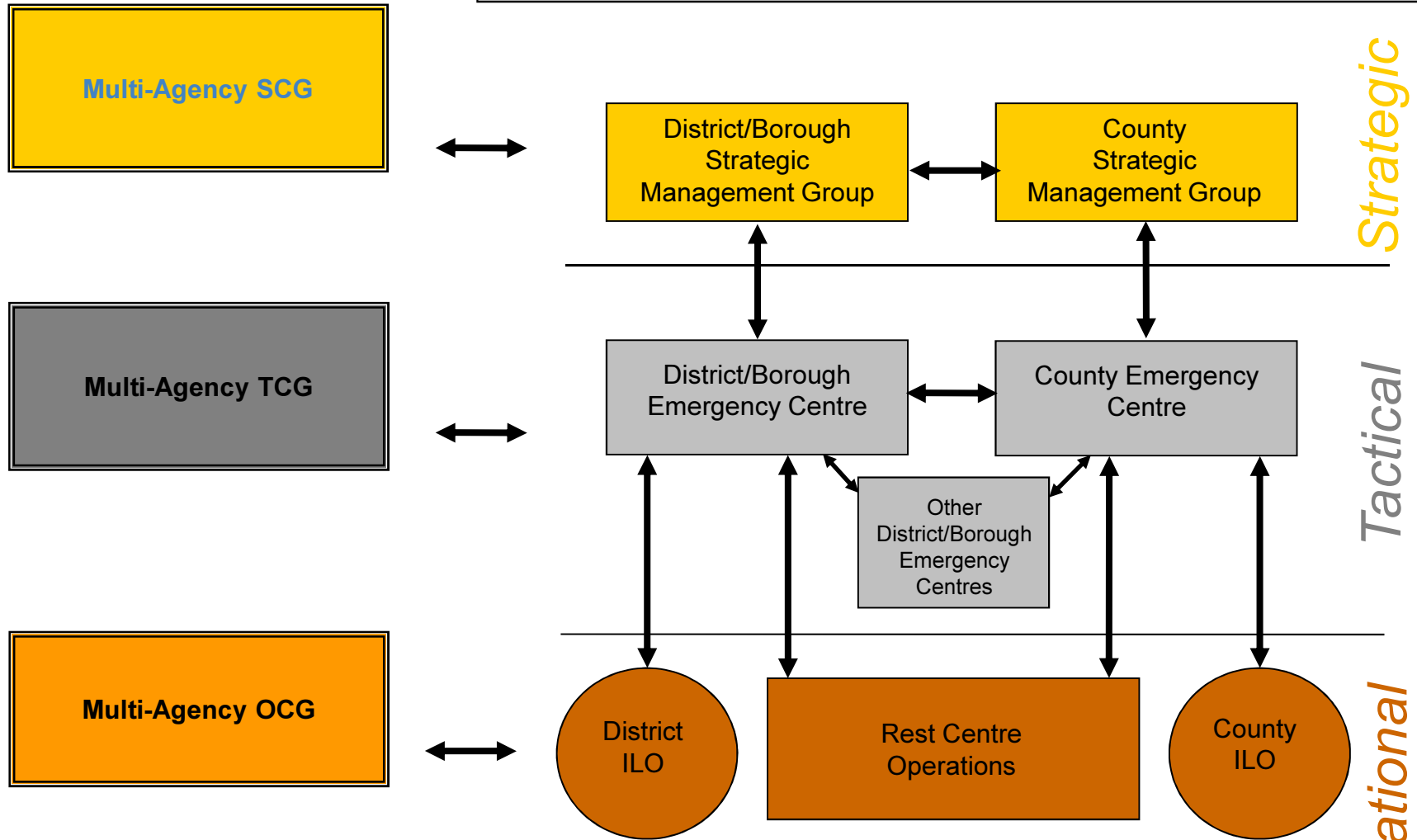
Kent Resilience Team

Public Protection Service

- Tri-party Management Team
- KRT Shared Service Level Agreement
- KRF Partnership Agreement
- Multi-agency planning activities
- KRF Business Plan & Activity Calendar
 - Communications plan
 - Training Plan
 - Exercise Plan
 - KRF engagement

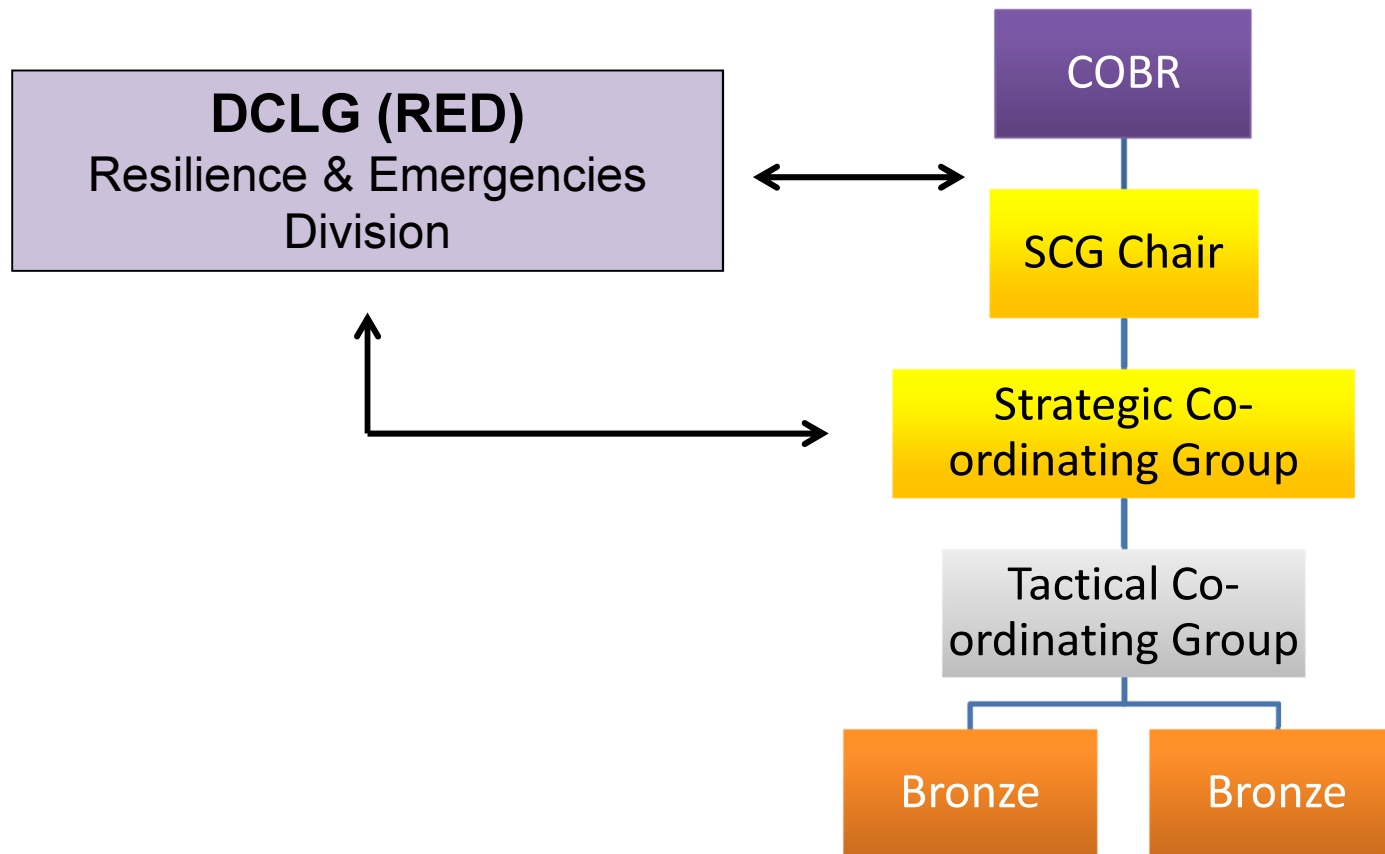


Local and Multi-Agency Command and Control



Strategic
 Tactical
 Operational

Relationship Between Central and Local Response



Principles for joint working

Principles for Joint Working

Co-location

Communication

Coordination

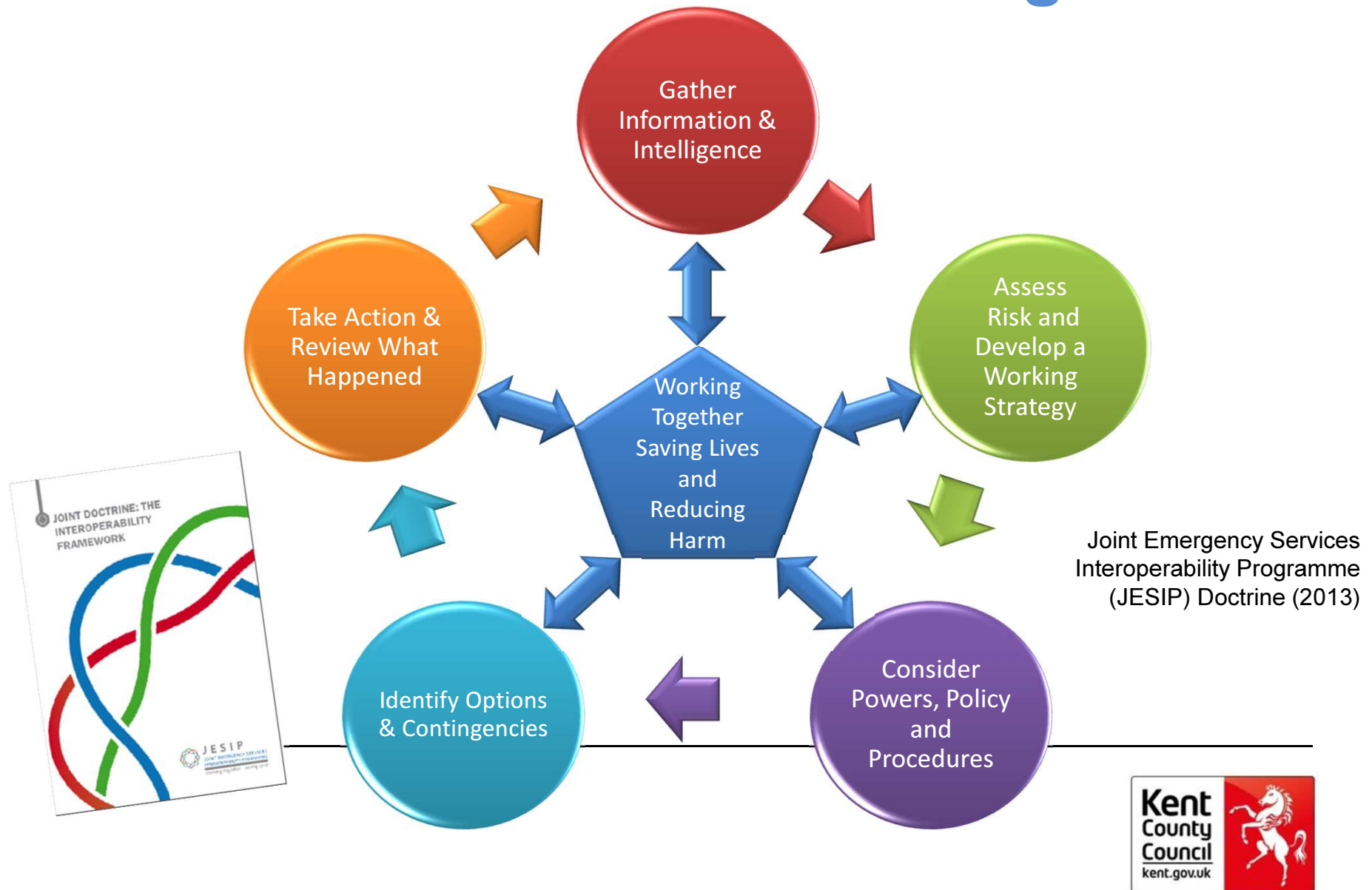
Joint Understanding of Risk

Shared Situational Awareness

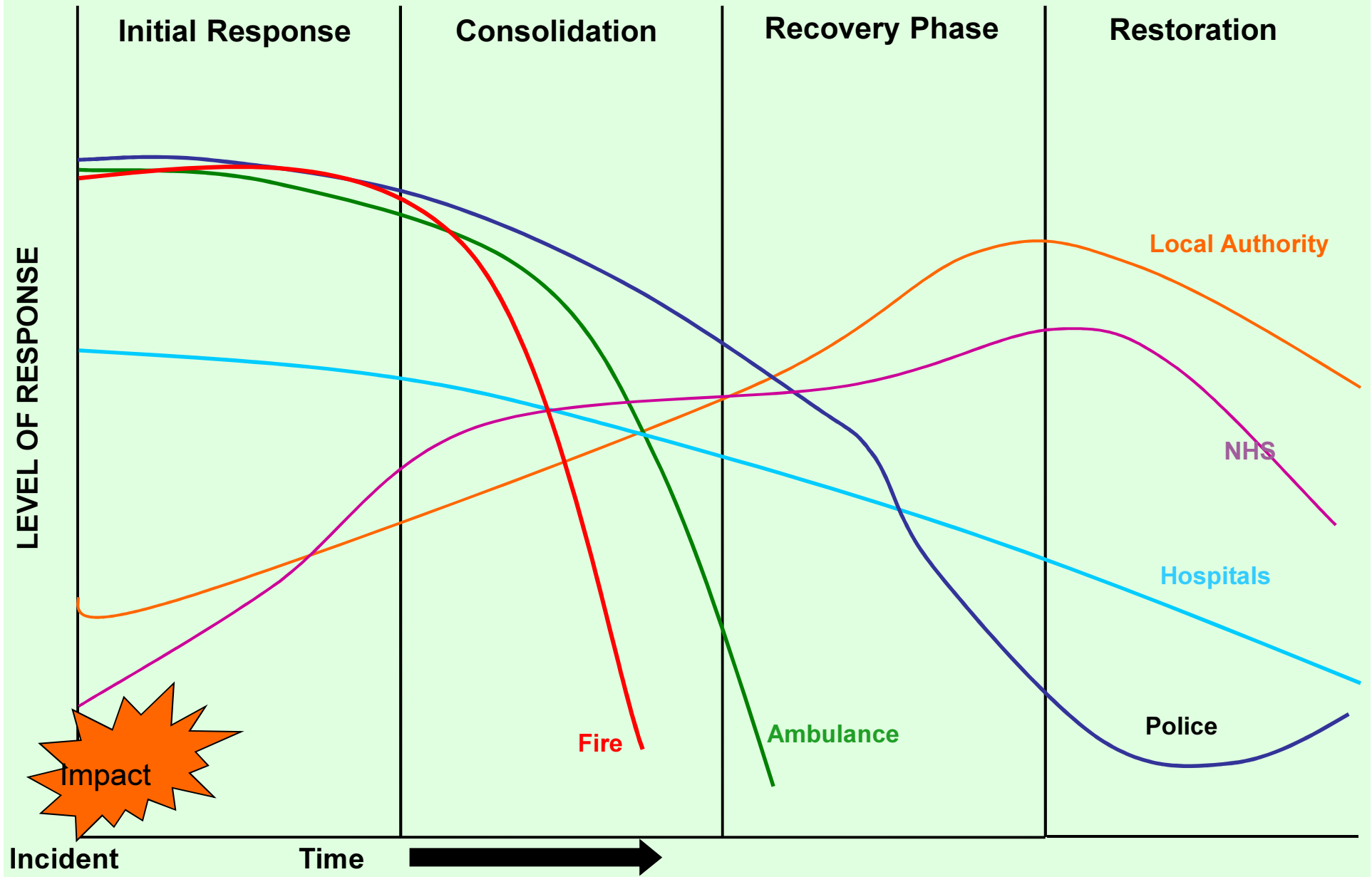
Kent Prepared



JESIP Joint Decision Making Model



Stages of Emergency Response



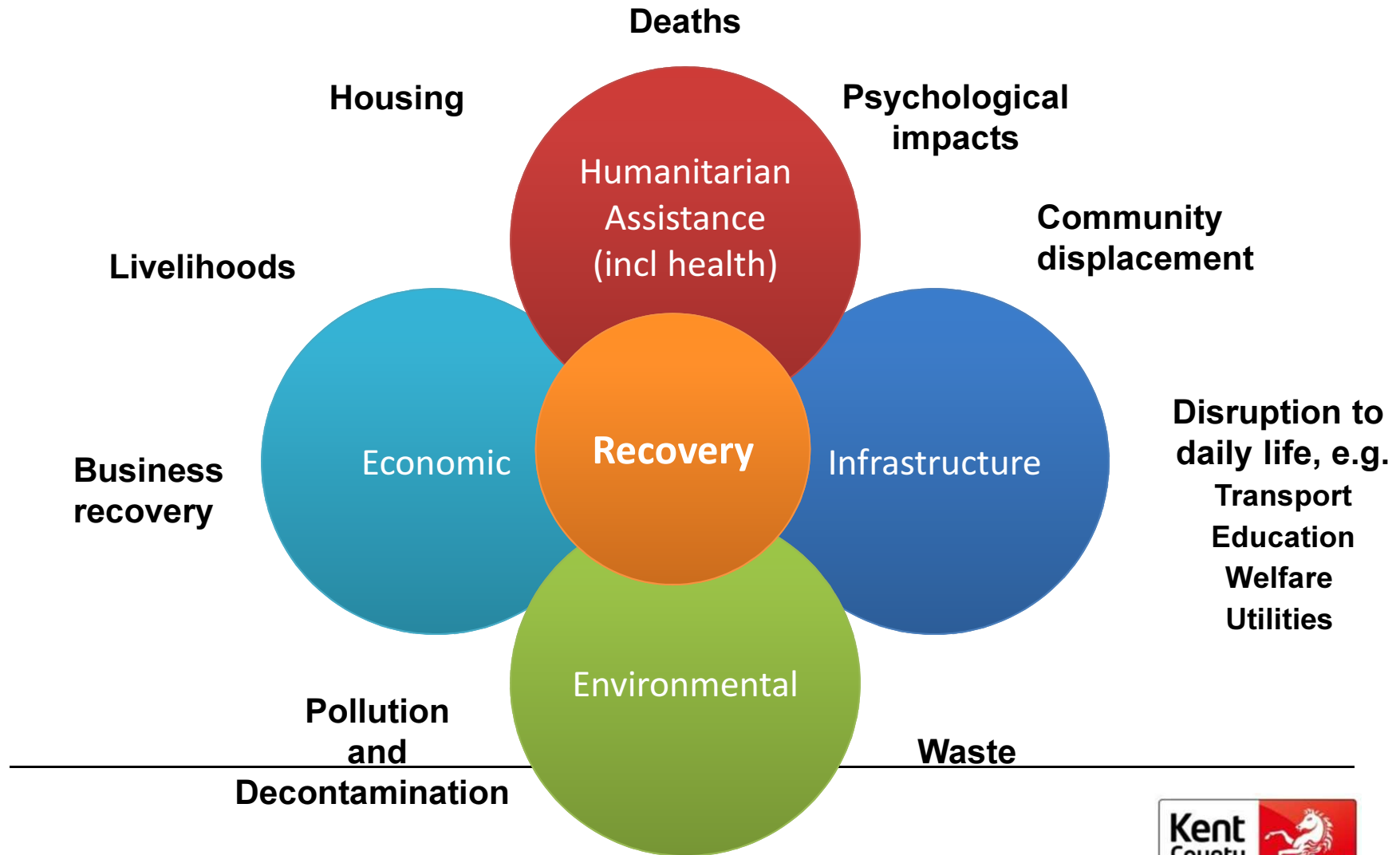


Recovery

Recovery Co-ordinating Group (RCG)

- A KCC responsibility for Major Emergencies
- Recovery Co-ordinating Group should be set up early into a response
- Wide area & catastrophic incidents may require co-ordination at the national level
 - Ensure that longer-term recovery priorities are reflected in planning & execution of the response
 - Ensure that relevant organisations in public, private & voluntary sectors are engaged from an early stage
 - Ensure continuity of management of the emergency

Components of Recovery



Visible Leadership

- *“...the Review notes the value of a high media profile for local leaders, as achieved by Council Leaders and Gold Commanders in a number of areas affected by the floods ... using the media as a way of communicating advice to the public and providing visible leadership at a local level”.*

*Learning lessons from the 2007 floods: Interim Report of the Review
by Sir Michael Pitt (former KCC Chief Executive)
See Ch.7, ‘Engaging the public’*



A local newspaper floats in flood waters at Otney Island near Oxford © Getty Images

Kent County Council Resilience and Emergency Planning Service



Questions

Contact Details

Fiona Gaffney – Head of Resilience and Emergency Planning Service

resilience@kent.gov.uk
Fiona.gaffney@kent.gov.uk

Tel. 03000 419465

